

What is an ROC curve?

Zhe Hui Hoo,^{1,2} Jane Candlish,¹ Dawn Teare¹

¹School of Health and Related Research (SchARR), University of Sheffield, Sheffield, UK
²Sheffield Adult CF Centre, Northern General Hospital, Sheffield, UK

Correspondence to
Dr Zhe Hui Hoo; z.hoo@sheffield.ac.uk

Received 7 March 2017
Accepted 8 March 2017
Published Online First
16 March 2017

ABSTRACT

The paper by Body *et al* is concerned with the evaluation of decision aids, which can be used to identify potential acute coronary syndromes (ACS) in the ED. The authors previously developed the Manchester Acute Coronary Syndromes model (MACS) decision aid, which uses several clinical variables and two biomarkers to 'rule in' and 'rule out' ACS. However, one of the two biomarkers (heart-type fatty acid binding protein, H-FABP) is not widely used so a revised decision aid has been developed (Troponin-only Manchester Acute Coronary Syndromes, T-MACS), which include a single biomarker hs-cTnT. In this issue, the authors show how they derive a revised decision aid and describe its performance in a number of independent diagnostic cohort studies. Decision aids (as well as other types of 'diagnostic tests') are often evaluated in terms of diagnostic testing parameters such as the area under the receiver operating characteristic (ROC) curve, sensitivity and specificity. In this article, we explain how the ROC analysis is conducted and why it is an essential step towards developing a test with the desirable levels of sensitivity and specificity.

INTRODUCTION

Making a diagnosis is an important role for clinicians, and often a range of tests are used to supplement history-taking and examination. However, not all diagnostic tests are equal, hence it is important to evaluate the diagnostic abilities of those tests.

What physicians want to know is whether a specific condition is present, or not present. Diagnostic tests can produce either yes/no answers (binary results) or a number on a continuous scale. In the diagnosis of deep vein thrombosis (DVT), for example, Doppler ultrasound would produce a binary result (DVT present or absent). However, the serum D-dimer level used to detect DVT gives a number in a range of possible values. Diagnostic tests that produce continuous results are often dichotomised because the outcome of interest is generally binary. An example would be the threshold (or cut-off point) of 500 µg/L to distinguish between a 'positive' and a 'negative' D-dimer result.¹

One of the challenges in interpreting the results of diagnostic tests that produce continuous measures is the selection of the threshold to distinguish a 'positive' test from a 'negative' test. We used the paper by Body *et al*² as an example to illustrate the role of receiver operating characteristic (ROC) curve in choosing the threshold cut-offs for the newly derived Troponin-only Manchester Acute Coronary Syndromes (T-MACS) score. The original Manchester Acute Coronary Syndromes (MACS) score used two thresholds to aid clinical decision making. A low threshold was set to 'rule out' a

diagnosis of acute coronary syndromes (ACS) and a higher threshold was used to 'rule in' a diagnosis of ACS. Patients with test results falling between these two thresholds would require further clinical observation. The T-MACS (and the original MACS) score estimate the probability of ACS from 0 (lowest probability) to 1 (highest probability).

Generating an ROC curve

To produce an ROC curve, the sensitivities and specificities for different values of a continuous test measure are first tabulated. This results, essentially, in a list of various test values and the corresponding sensitivity and specificity of the test at that value. Then, the graphical ROC curve is produced by plotting sensitivity (true positive rate) on the y-axis against 1-specificity (false positive rate) on the x-axis for the various values tabulated.

Using an ROC curve to understand the diagnostic value of a test

An ROC curve that follows the diagonal line $y=x$ produces false positive results at the same rate as true positive results. Therefore, we expect a diagnostic test with reasonable accuracy to have an ROC curve in the upper left triangle above the $y=x$ line ('reference line'), as shown in [figure 1](#).

The area under the ROC curve (AUC) is a global measure of the ability of a test to discriminate whether a specific condition is present or not present. An AUC of 0.5 represents a test with no discriminating ability (ie, no better than chance), while an AUC of 1.0 represents a test with perfect discrimination. The (unpublished) ROC curve for ACS ([figure 1](#)) which was generated from the T-MACS scores calculated for the derivation set has an AUC of 0.94 after correction for in-sample optimism by cross-validation, which would suggest that T-MACS score is a very good discriminator of ACS versus no ACS.

When selecting an optimal threshold (or cut-off point), we need to consider the aims of the diagnostic test, considering the significance and costs of a false-positive or false-negative interpretation. A commonly used approach when selecting a cut-off point is to give equal weight to the importance of sensitivity and specificity by choosing the point nearest to the top-left most corner of the ROC curve.³ This point is also known as the Youden Index.⁴ We illustrate how this is done using [figure 1](#). If the interest was to simply find the optimal trade-off between sensitivity and specificity, then a T-MACS score of ≥ 0.34 represents this point of balance. We can read from the ROC curve that sensitivity is 83.4% and specificity is 94.6% at this threshold. If we use this threshold, then the T-MACS score has an accuracy of 92.2% in



► <http://dx.doi.org/10.1136/emj-2016-205983>



CrossMark

To cite: Hoo ZH, Candlish J, Teare D. *Emerg Med J* 2017;**34**:357–359.

Concepts

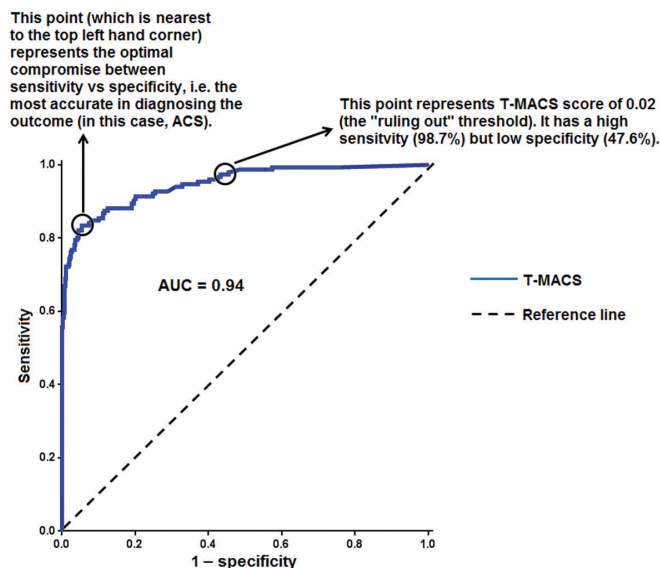


Figure 1 Troponin-only Manchester Acute Coronary Syndromes (T-MACS) receiver operating characteristic curve for acute coronary syndromes (ACS) using data from derivation set. AUC, area under the ROC curve.

detecting ACS among adults presenting to ED with chest pain in the study. Accuracy is defined as the proportion of correct decisions (ie, true positive+true negative) over the number of total tested.⁵ The AUC can be thought of an indicator of overall ‘accuracy’, and there is only one AUC value for each ROC curve. On the other hand, ‘accuracy’ will vary from point-to-point along the ROC curve, as there is variation in sensitivity and specificity from point-to-point (see [table 1](#)).

By selecting the threshold based on the trade-off between sensitivity and specificity, we are assuming that the balance between false-positive and false-negative rates is not clinically important.⁶ This may not be true in two common scenarios. The first scenario is when the clinical risk of missing a particular diagnosis is disproportionate to the risk of overdiagnosis (or vice versa). The second scenario is when the primary intended use of a diagnostic test is for either ‘ruling-in’ or ‘ruling-out’ a target condition. In these scenarios, it is important to understand the balance between the two types of errors and to select the threshold accordingly.

Body *et al* selected a threshold of 0.02 for T-MACS and classify patients below this value as ‘ruled out’ (ie, very low risk) using the derivation set. This threshold has very high sensitivity

(98.7%)—so if a patient score is this low, we are very confident they are at very low risk of ACS. However, scores above this threshold are only 47.6% specific, hence the accuracy of detecting ACS with this threshold is only 58.6%. As noted above, a T-MACS score threshold of 0.34 represents the optimal balance between sensitivity and specificity, thus has a higher accuracy of 92.2%. However, this threshold only has a sensitivity of 83.4% for detecting ACS. This means around 16.6% of adults presenting to ED with chest pain that have ACS will be undetected if a T-MACS score of <0.34 is considered a ‘negative’ test result. Therefore, despite the lower accuracy with a threshold of 0.02, it is a more useful threshold for ‘ruling out’ ACS since <2% of ACS cases will be undetected.

Body *et al* also selected a higher threshold of 0.95 for ‘ruling in’ ACS. This threshold also has a modest accuracy of 88.6%, due to the low sensitivity of 47.0%. However, this threshold has a specificity of 100%, which means there is no false-positive result. Therefore, we can be confident that a patient at this higher threshold is at a very high risk for ACS. In contrast, a T-MACS score of ≥ 0.34 will result in a false-positive rate of 5.4% despite its superior accuracy of 92.2%.

[Table 1](#) represents the sensitivity and specificity of the various T-MACS thresholds for ACS using the derivation set, linking to the results tabulated in [table 4](#) of the paper by Body *et al*. [Table 1](#) illustrates the rising specificity and declining sensitivity with higher threshold values. A strength of the study by Body *et al* is the re-evaluation of the selected thresholds using a validation set. This yielded very similar results to the derivation set (eg, the sensitivity for the ‘ruled out’ threshold for ACS remains very high at 98.1%), suggesting that the thresholds selected are indeed robust.

Take home points

The ROC curve can be used to determine an appropriate cut-off, affecting the sensitivity and specificity of the test. The selection of a test threshold depends on the purpose of the test and not necessarily just by giving equal weight to sensitivity and specificity to achieve higher accuracy.

Contributors All authors contributed to and approved of the final submitted manuscript.

Competing interests None declared.

Patient consent This is a concept paper and does not involve patients.

Provenance and peer review Not commissioned; internally peer reviewed.

© Article author(s) (or their employer(s) unless otherwise stated in the text of the article) 2017. All rights reserved. No commercial use is permitted unless otherwise expressly granted.

Table 1 The sensitivity and specificity of the various T-MACS thresholds for ACS (derivation set)

Threshold for a positive test	Sensitivity (95% CI)	Specificity (95% CI)	Accuracy (95% CI)
Low risk (ie, very low risk=negative test)	98.7% (95.3% to 99.8%)	47.6% (43.4% to 51.9%)	58.6 (55.0 to 62.3)
Moderate risk (ie, very low risk and low risk=negative test)	94.0% (89.0% to 97.2%)	68.5% (64.4% to 72.3%)	74.0 (70.7 to 77.2)
High risk (ie, very low risk, low risk and moderate risk=negative test)	47.0% (38.9% to 55.3%)	100.0% (99.3% to 100.0%)	88.6 (86.3 to 91.0)

Sensitivity is the proportion of true positives that are correctly identified by the test.

Specificity is the proportion of true negatives that are correctly identified by the test.

Accuracy is the proportion of correct decisions (ie, true positive+true negative) over the number of total tested.

ACS, acute coronary syndromes; T-MACS, Troponin-only Manchester Acute Coronary Syndromes.

REFERENCES

- 1 Perrier A, Desmarais S, Goehring C, *et al*. D-dimer testing for suspected pulmonary embolism in outpatients. *Am J Respir Crit Care Med* 1997;156:492–6.
- 2 Body R, Carlton E, Sperrin M, *et al*. Troponin-only manchester acute coronary syndromes (T-MACS) decision aid: single biomarker re-derivation and external validation in three cohorts. *Emerg Med J* Published Online First: 26 August 2016. doi: 10.1136/emered-2016-205983.
- 3 Altman DG, Bland JM. Diagnostic tests 3: receiver operating characteristic plots. *BMJ* 1994;309:188.
- 4 Schisterman EF, Perkins NJ, Liu A, *et al*. Optimal cut-point and its corresponding youden index to discriminate individuals using pooled blood samples. *Epidemiology* 2005;16:73–81.
- 5 Metz CE. Basic principles of ROC analysis. *Semin Nucl Med* 1978;8:283–98.
- 6 Zweig MH, Campbell G. Receiver-operating characteristic (ROC) plots: a fundamental evaluation tool in clinical medicine. *Clin Chem* 1993;39:561–77.



What is an ROC curve?

Zhe Hui Hoo, Jane Candlish and Dawn Teare

Emerg Med J 2017 34: 357-359 originally published online March 16, 2017

doi: 10.1136/emered-2017-206735

Updated information and services can be found at:

<http://emj.bmj.com/content/34/6/357>

These include:

References

This article cites 5 articles, 2 of which you can access for free at:

<http://emj.bmj.com/content/34/6/357#BIBL>

Email alerting service

Receive free email alerts when new articles cite this article. Sign up in the box at the top right corner of the online article.

Topic Collections

Articles on similar topics can be found in the following collections

[Editor's choice](#) (125)

Notes

To request permissions go to:

<http://group.bmj.com/group/rights-licensing/permissions>

To order reprints go to:

<http://journals.bmj.com/cgi/reprintform>

To subscribe to BMJ go to:

<http://group.bmj.com/subscribe/>